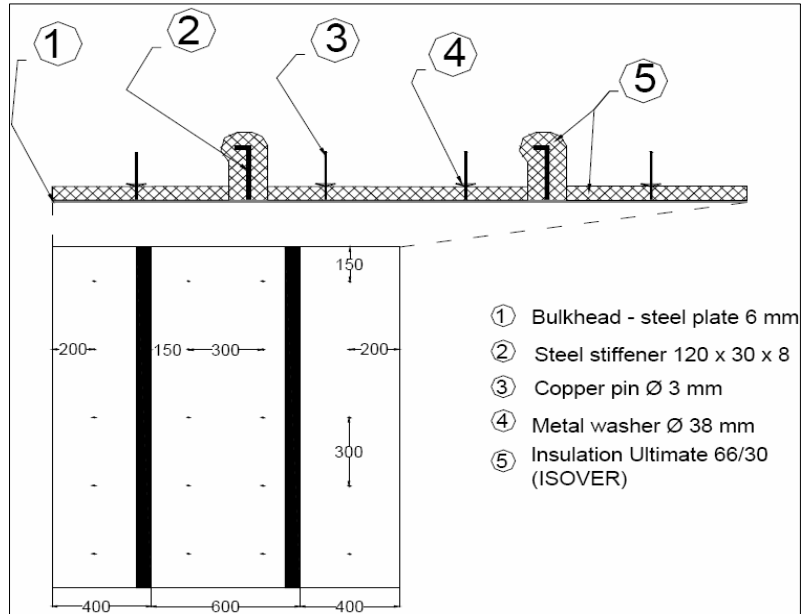


Tested Configuration	
Bulkhead	
Steel Plate 6mm	
Ultimate UMPN 66/30 on panel Density 66kg/m ³ , Thickness 30mm	
Ultimate UMPN 66/30 on stiffeners Density 66kg/m ³ , Thickness 30mm	

Laboratory	CSTB LABE
Date	15/05/2008
Volume Reception Room	64m ³
Tested Surface	2,1m ²
T° Reception Room	26°C
Relative humidity Reception room	47%



Frequency (Hz)	R(dB)
100	24,4
125	31
160	27,7
200	25,4
250	32,2
315	36,1
400	39,5
500	41,4
630	47,1
800	51,5
1000	53,8
1250	56,9
1600	58
2000	55,6
2500	56,3
3150	60,4
4000	64,8
5000	65,7

R _w	44 dB
R _A =R _w +C	42 dB

