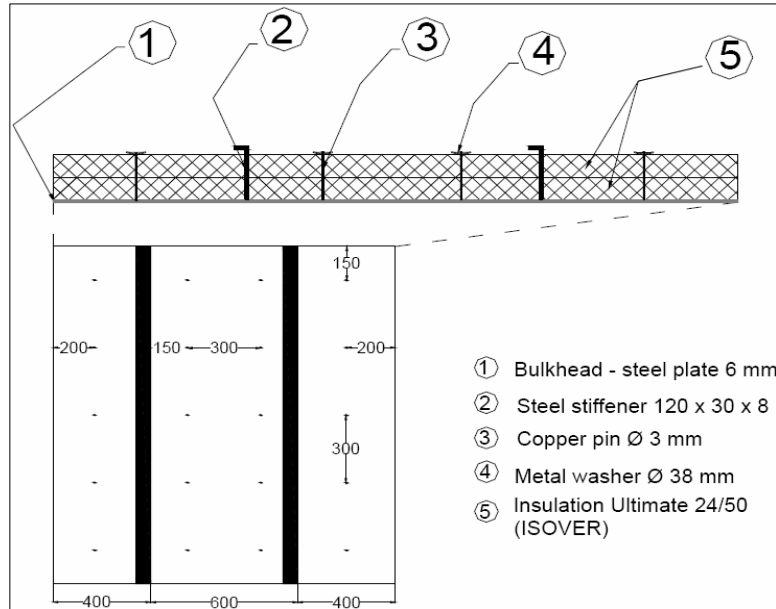


Tested Configuration	
Bulkhead	
Steel Plate 6mm	
Ultimate UMPN 24/50(x2) on panel Density 24kg/m3, Thickness 100mm	
No insulation on stiffener	

Laboratory	CSTB LABE
Date	15/05/2008
Volume Reception Room	64m3
Tested Surface	2,1m ²
T° Reception Room	26°C
Relative humidity Reception room	53%



Frequency (Hz)	R(dB)
100	23,5
125	29,7
160	27,7
200	29,1
250	37,7
315	41,5
400	46,9
500	49,4
630	53,2
800	56,9
1000	58,5
1250	60,3
1600	61
2000	58,3
2500	57,8
3150	60
4000	66,2
5000	65,7

R _w	48 dB
R _A =R _w +C	45 dB

