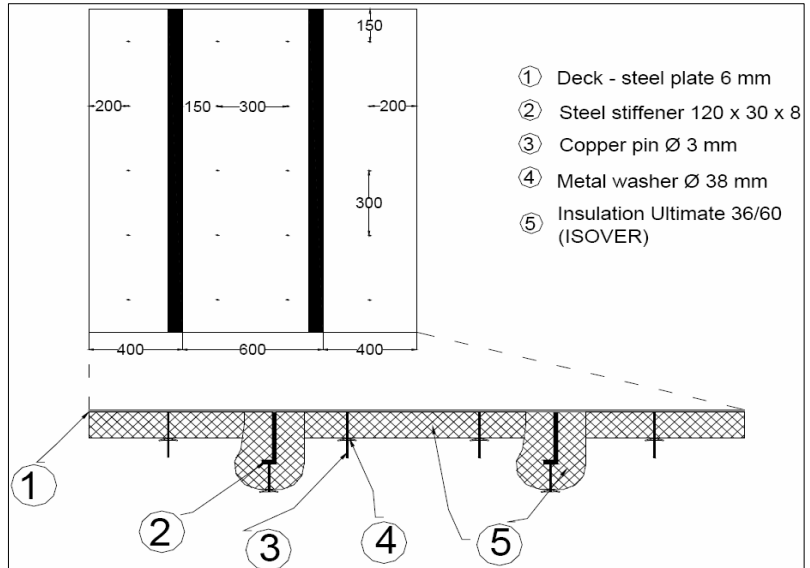


| Tested Configuration | |
|---|--|
| Deck | |
| Steel Plate 6mm | |
| Ultimate UMPN 36/60 on panel Density 36kg/m ³ , Thickness 60mm | |
| Ultimate UMPN 36/60 on stiffeners Density 36kg/m ³ , Thickness 60mm | |

| | |
|----------------------------------|--------------------|
| Laboratory | CSTB LABE |
| Date | 10/07/2008 |
| Volume Reception Room | 66,1m ³ |
| Tested Surface | 2,1m ² |
| T° Reception Room | 25°C |
| Relative humidity Reception room | 72% |



| Frequency (Hz) | R(dB) |
|----------------|-------|
| 100 | 27,4 |
| 125 | 33,6 |
| 160 | 28,1 |
| 200 | 29,6 |
| 250 | 35,6 |
| 315 | 38,7 |
| 400 | 40 |
| 500 | 44,9 |
| 630 | 48,2 |
| 800 | 51,2 |
| 1000 | 54,2 |
| 1250 | 55,6 |
| 1600 | 57,1 |
| 2000 | 56,3 |
| 2500 | 57,9 |
| 3150 | 59,8 |
| 4000 | 62,3 |
| 5000 | 61,7 |

| | |
|-----------------------------------|-------|
| R _w | 47 dB |
| R _A =R _w +C | 45 dB |

