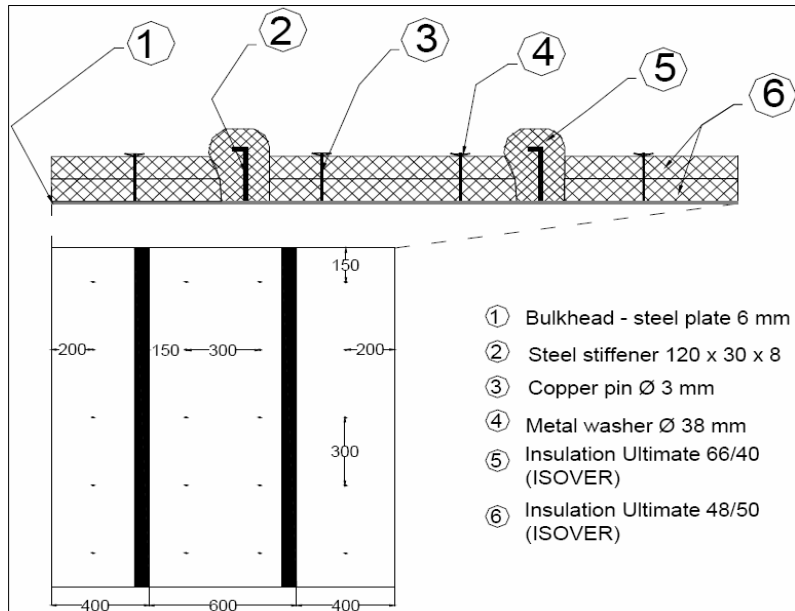


Tested Configuration	
Bulkhead	
Steel Plate 6mm	
Ultimate UMPN 48/50 (x2) on panel Density 48kg/m3, Thickness 100mm	
Ultimate UMPN 66/40 on stiffeners Density 66kg/m3, Thickness 40mm	

Laboratory	CSTB LABE
Date	15/05/2008
Volume Reception Room	64m3
Tested Surface	2,1m <sup>2</sup>
T° Reception Room	26°C
Relative humidity Reception room	53%



Frequency (Hz)	R(dB)
100	24
125	30
160	28,7
200	29,3
250	39,2
315	45,4
400	48,9
500	52
630	56,4
800	59,7
1000	60,2
1250	61,8
1600	63,1
2000	63,2
2500	61,9
3150	61,5
4000	68,8
5000	67,1

R <sub>w</sub>	49 dB
R <sub>A</sub> =R <sub>w</sub> +C	46 dB

