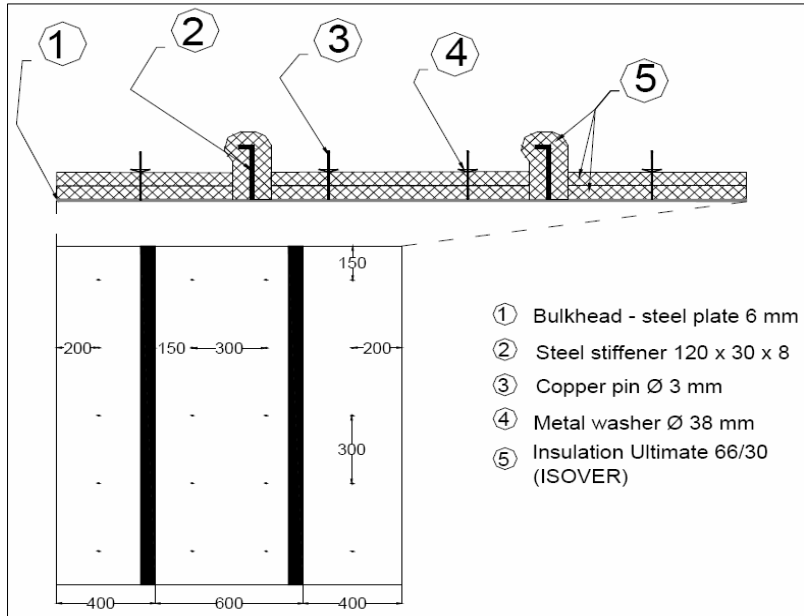


Tested Configuration	
Bulkhead	
Steel Plate 6mm	
Ultimate UMPN 66/30 (x2) on panel Density 66kg/m ³ , Thickness 60mm	
Ultimate UMPN 66/30 on stiffeners Density 66kg/m ³ , Thickness 30mm	

Laboratory	CSTB LABE
Date	15/05/2008
Volume Reception Room	64m ³
Tested Surface	2,1m ²
T°Reception Room	26°C
Relative humidity Reception room	51%



Frequency (Hz)	R(dB)
100	24
125	29,2
160	26,8
200	27,2
250	36
315	41,9
400	45
500	46
630	52,3
800	57,7
1000	59,3
1250	60,8
1600	62,1
2000	61,6
2500	62,5
3150	65,6
4000	68,7
5000	67

R _w	47 dB
R _A =R _w +C	44 dB

