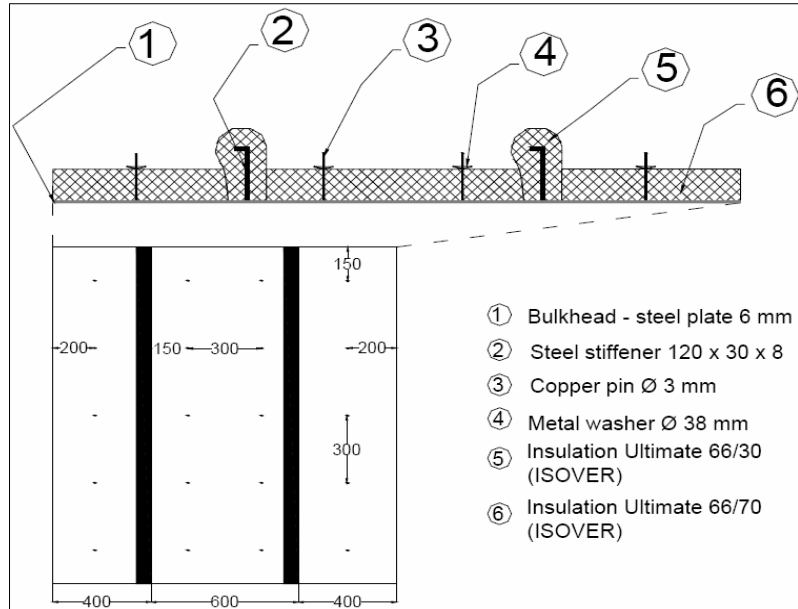


Tested Configuration	
Bulkhead	
Steel Plate 6mm	
Ultimate UMPN 66/70 on panel Density 66kg/m <sup>3</sup> , Thickness 70mm	
Ultimate UMPN 66/30 on stiffeners Density 66kg/m <sup>3</sup> , Thickness 30mm	

Laboratory	CSTB LABE
Date	15/05/2008
Volume Reception Room	64m <sup>3</sup>
Tested Surface	2,1m <sup>2</sup>
T°Reception Room	25,5°C
Relative humidity Reception room	51%



Frequency (Hz)	R(dB)
100	24,3
125	29,8
160	26,2
200	27,7
250	37,1
315	41
400	47,3
500	50,5
630	54,9
800	58,8
1000	60
1250	61,4
1600	62,3
2000	61,9
2500	61,6
3150	62,5
4000	68,8
5000	67,1

R <sub>w</sub>	47 dB
R <sub>A</sub> =R <sub>w</sub> +C	44 dB

